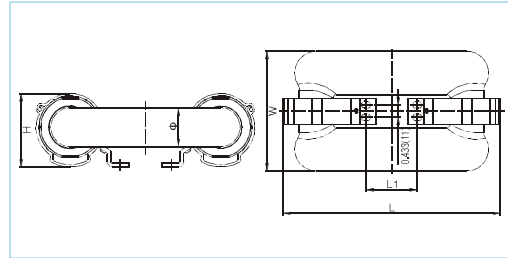


**TUBULAR INDUCTION BULB, RECTANGLE,
JW SERIES (40-400W)**



40-60W

Dimensions [Unit: Inch(mm)]



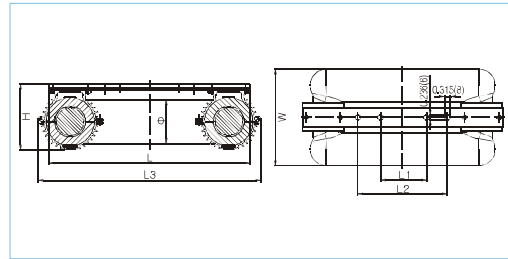
JW 40-60W Unit:Inch(mm)

Wattage	Φ	L	L1	H	W
40W	1.50(38)	7.56(192)	1.77(45)	2.54(64.5)	4.17(106)
60W	1.50(38)	7.56(192)	1.77(45)	2.54(64.5)	4.17(106)



80-250W

Dimensions [Unit: Inch(mm)]



JW 80-250W [Unit: Inch(mm)]

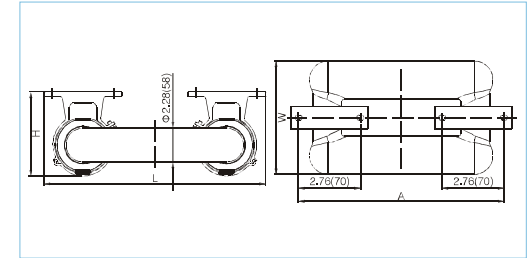
Wattage	Φ	L	L1	L2	L3	H	W
80	2.12(54)	10.20(259)	3.15(80)	—	11.42(290)	3.43(87)	5.67(144)
100	2.12(54)	10.20(259)			11.42(290)		
120	2.12(54)	11.77(299)			12.99(330)		
150	2.12(54)	13.35(339)			14.57(370)		
200	2.28(58)	16.50(419)	9.45(240)	—	17.72(450)	—	5.98(152)
250	2.28(58)	18.07(459)			19.29(490)		6.77(172)

**TUBULAR INDUCTION BULB, RECTANGLE,
JW SERIES (40-400W)**



300-400W

Dimensions [Unit: Inch(mm)]



JW 300-400W [Unit: Inch(mm)]

Wattage	A	L	H	W
300	22.56(573)	23.23(590)	3.74(95)	6.77(172)
400	32.40(823)	33.07(840)		6.93(176)

Technical Parameters

Model	Power (W)	Operating frequency	Pupil Lumens (LM)	Rated Lumens (LM)	Rated Efficiency (LM/W)	CCT	CRI	Lumens Maintenance (56,000hrs)	Average LIFESPAN (HRS)	Warranty
YML-WY40I850W38	40	250KHZ	4160-4480	2600-2800	65-70	5000K	≥80	≥70%	100,000	5yrs
YML-WY60I850W38	60		6720-7200	4200-4500	70-75					
YML-WY80I850W/Z	80		8960-9600	5600-6000	70-75					
YML-WY100I850W/Z	100		11200-12000	7000-7500	70-75					
YML-WY120I850W/Z	120		14400-15360	9000-9600	75-80					
YML-WY150I850W/Z	150		18000-19200	11250-12000	75-80					
YML-WY200I850W58/Z	200		25600-27200	16000-17000	80-85					
YML-WY250I850W58/Z	250		32000-34000	20000-21250	80-85					
YML-WY300I850W58	300		40800-43200	24000-25500	80-85					
YML-WY400I850W58	400		54400-57600	32000-34000	80-85					

- Note:** 1. (CCT) :5000K. Products withCCT 2700-6500K areavailable upon request
 2. The lampmust be installedin an enclosedfixture
 3. Ambientworking temperature mustbe -25~40 (-13~104 F)
 4. Products forworking under working temperature from -40~0(-40 ~32 F)are available uponrequest