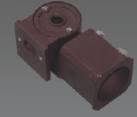
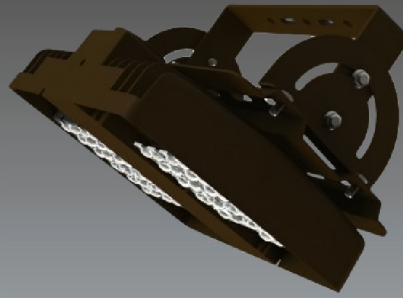


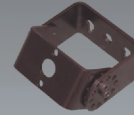
Flood Lighting

YML-1FL31S Series

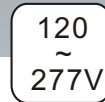
Mounting Mode Options



Slip Flitter



U-Bracket

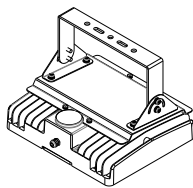
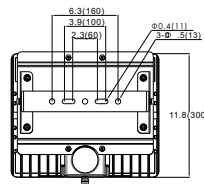
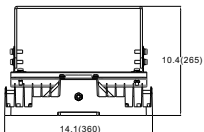


Applications

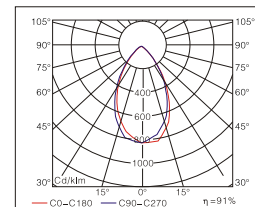
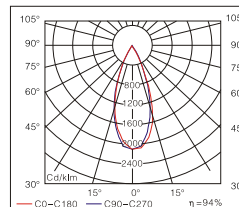
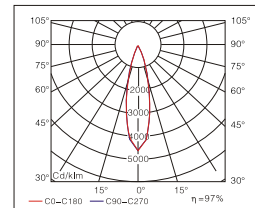
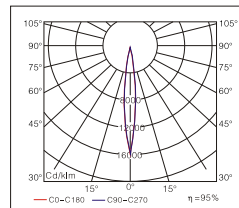
Gymnasiums, Billboards, Buildings, Parks, Pools, Parking Lots, Plazas, etc.

- Efficiency of chips: 150-165 lm/w, ,180-195 lm/w
- LENS: Optical grade PC, anti-UV oxidation.
- Beam Angle: 10° , 25° , 40° , 60° , 100° ,special beam angle is available upon request.
- Housing: die casting aluminum housing with excellent heat dissipation, surface treated with powder coated finish for corrosion and static resistance.
- Input voltage: 120-277 VAC, 277~480VAC,50/60 HZ
- LED module can be dismantled separately for maintenance.
- LED driver: constant current, efficiency is up to 92%,PF≥0.95.
- IP class: IP65

Dimension [Inch(mm)]



Distribution Curve Flux



Ordering Information

Example: YML-1FL31S-150-750-C-S-010-1

Company code	Voltage	Type	Power	Ra	Colour Temp.	Colour Options	Mounting	Optic	Options
YML	1	FL 31S	60 (60W 7800Lumens)	7	27	C	S	010	1
	120~277VAC		60P (60W 8580Lumens)	70	2700K	Coffee(standard)	Slip flitter	10	0~10V dimming
	2		80 (80W 9900Lumens)	8	30	B	Y	025	2
	200~240VAC		80P (80W 10900Lumens)	80	3000K	Black	U bracket	25	Timing dimming
	3		100 (100W 11700Lumens)	9	40	S	BY	040	
	100~120VAC		100P (100W 12850Lumens)	90	4000K	Silver	Big U bracket	40	
	4		120 (120W 15000Lumens)		50			60	
	277~480VAC		120P (120W 16500Lumens)		5000K			100	
	5		150 (150W 18000Lumens)		5700K			100	
	347~480VAC		150P (150W 19800Lumens)		6500K				